



AMAL ALLIANCE
EMPOWERING GLOBAL CITIZENS



Annual Report 2021

STAN THE N CO

02.

Note From the Founder

03.

Our Vision

04.

4 Pillars of Support & SDGs

05.

Education Reimagined

06.

Colors of Kindness

08.

Supporting Offline Learners

09.

Leveraging Tech

10.

Global Impact

11.

Renewing our Commitment

12.

Our Partners & Sponsors

13.

Our Team



NOTE FROM THE FOUNDER

As this global health crisis forges on, children around the world continue to face a disruption to their education. What's more, kids everywhere are experiencing a shared trauma that is producing negative effects on their social, emotional, and cognitive development.

Looking back, our team embraced the monumental challenges presented in 2020 as an opportunity to reimagine how children learn, how they cope with toxic stressors, and how unconventional delivery mechanisms of instruction could be used to bridge the learning loss. Winning UNHCR's Humanitarian Education Accelerator COVID 19 Challenge propelled our work in ways never imaginable. It was through this experience that we were able to polish our core competency of creating quality holistic content. Our unique ability to combine social and emotional learning (SEL) and psychosocial support (PSS) as an innovative EdTech solution, which was both playful and easy to scale, led to a string of accolades and awards in 2021.

It was with heartfelt gratitude that Colors of Kindness was nominated this year as one of the **top 3 models for Crisis and Conflict Response in 2020** by the *mEducation Alliance*, won **IDEO's Education (Re)Open Challenge**, won the **Most Holistic Approach in South Asia** by *HundrED* and *The Royal Academy of Bhutan*, and was **named one of 13 of the TOP global solutions in social and emotional learning** by the *LEGO Foundation* and *HundrED*. I couldn't be prouder of our army of volunteers, interns, consultants, and the visionaries that worked tirelessly to build a program rooted in loving kindness.

Prior to the pandemic, we served 1,100 children. Now, thanks to our donors, partners, and leveraging of tech, we are proud to have approximately 275,000 children benefitting from our programs worldwide. Whether it be through our initial COVID response: *We Are In This Together*, our *Superhero Academy*, *SEL Workbook*, or direct implementation of Colors of Kindness and its adaptations, **our content has been used in 175 countries** - an accomplishment far beyond what we had initially set out to do.

Now more than ever, our mission is critical to ensuring children transition safely back into the classroom and are ready to learn! We stand committed to all children, regardless of their socio-economic status, location, color, ethnicity, religious background, sexual orientation, disabilities, or any other form of discrimination that exists.

At Amal Alliance, we fervently believe all children have the fundamental right to an education and to experience the joy of playing as a child. To this effect, we will continue to support childrens' wellbeing and mental health, and provide access to the skills that will allow them to thrive in the 21st century!

DANIELLE DE LA FUENTE
FOUNDER & CEO



OUR VISION

Amal Alliance seeks to engage both the micro and macro structures that affect displaced and disenfranchised children by offering a holistic intervention for this extremely vulnerable population. On an individual level, our trauma-informed programs seek to empower displaced and disenfranchised youth, providing a safe space in which children can simply be children. We incorporate mindfulness practices and play as an informal means to address trauma and foster a sense of inner peace. In addition, we focus on social emotional programming to hone emotional intelligence and interpersonal skills necessary to build a more cohesive, peaceful community.

Realizing that issues do not occur in a vacuum, we also engage the macro structures to ensure the sustainability and effectiveness of our micro interventions. We advocate for psychosocial support, early childhood development, social emotional learning, and increased access to education in emergencies and protracted crises. We work with the United Nations, national governments, and other NGOs to create synergy between systems to ensure the support that displaced children so desperately need to grow. Engaging different system levels increases the effectiveness and ensures the sustainability of our work. A complex issue requires an equally complex response.

4 PILLARS OF SUPPORT



SOCIAL EMOTIONAL LEARNING

Increases the ability to properly identify and process emotions, thus decreasing behavioral problems and emotional distress



EARLY CHILDHOOD DEVELOPMENT

Supports healthy cognitive, emotional, and physical growth during the most formative developmental years



PSYCHOSOCIAL SUPPORT

Improves overall well-being by holistically engaging the mind, body, and spirit



PEACEBUILDING

Creates cohesive, more peaceful communities by recognizing the importance of human relationships

ADVANCING GLOBAL GOALS (SDGS):



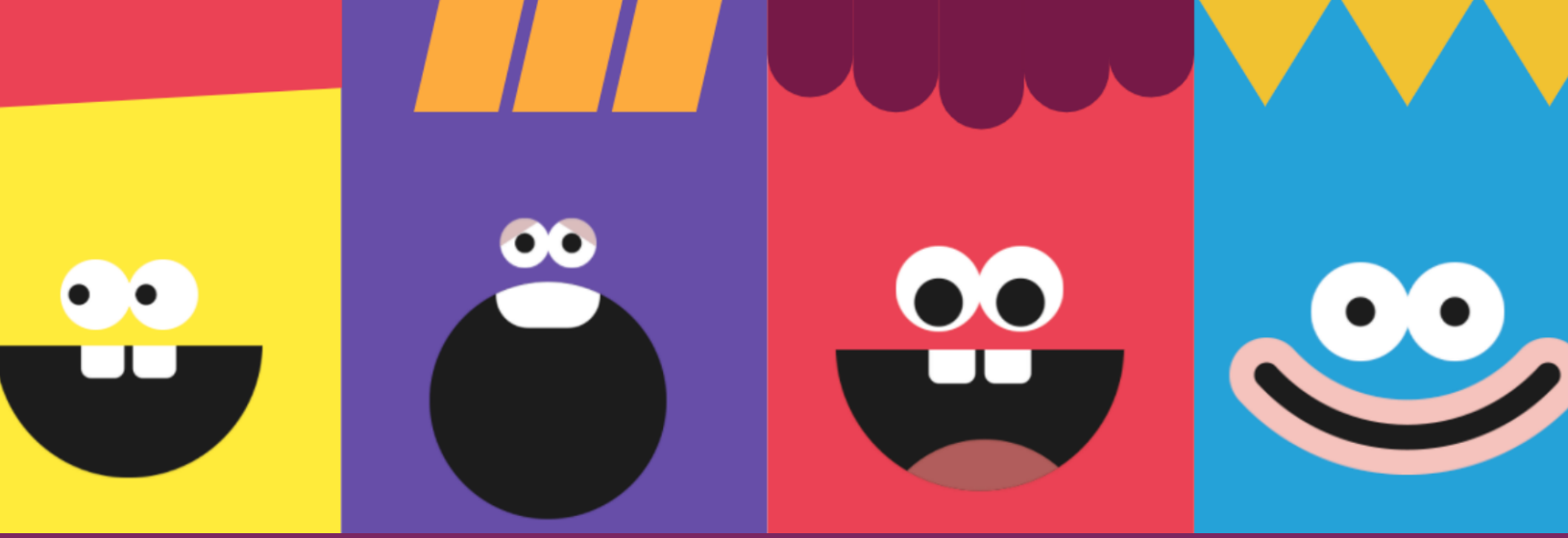
EDUCATION REIMAGINED



The COVID-19 pandemic disrupted the lives of children around the world. The closures of schools and community centers, in addition to mandatory quarantines, have added stressors to households and interrupted optimal child development. This is especially true for already vulnerable children, including children with disabilities and children living outside of family care, who are at increased risk of infectious disease, and of physical and emotional maltreatment, mental distress, and violence. But despite the numerous challenges COVID presented, there is a unique opportunity to reimagine learning that supports wellbeing to enhance academic outputs.

While the long-term consequences of the pandemic regarding student trauma are unknown, it is quite possible that the impact on student mental health will not be apparent upon a return to the classroom. Ergo, investment in holistic learning approaches is essential now.

To this effect, social emotional learning (SEL) is particularly important for children as it provides mental health and psychosocial support (MHPSS). SEL has proven to be a necessary component to educational systems, supporting teachers, caregivers, and their children in a positive and safe learning environment. Through SEL, learners gain the critical life skills for academic success, and the skills necessary to thrive in the 21st century. Our SEL content is designed to compliment formal and non-formal systems to holistically reengage learners and accelerate the learning losses presented by the disruption to their education.



COLORS OF KINDNESS

**Humanitarian
Education
Accelerator**



THE ROYAL ACADEMY OF BHUTAN

Colors of Kindness is Amal Alliance's Multi-Award Winning Education-in-Emergencies (EiE) EdTech initiative. Born out of UNHCR's Humanitarian Education Accelerator COVID 19 Challenge, this innovative solution seeks to address the disruption of education as a result of global crises. Our program aims to enhance the well-being of teachers and children, encourage social inclusion, and support equitable access to holistic education.

Voted as one of the most innovative and scalable methodologies for social and emotional learning by the LEGO Foundation & HundrED, it utilizes social and emotional learning materials delivered via a combination of a podcast within a digital workbook.



WORKS ONLINE
OR OFFLINE



INCLUDES M&E
FRAMEWORK



GENDER &
DISABILITY
INCLUSIVE



CULTURALLY
RELEVANT

PROVEN IMPACT

16.5%

INCREASE IN SOCIAL & EMOTIONAL
COMPETENCIES AMONGST THE CHILDREN

99%

OF CAREGIVERS NOTED THEIR CHILDREN'S
BEHAVIOR AND MOOD IMPROVED

THEMES & SKILLS

- SOCIAL AWARENESS
- APPRECIATING DIVERSITY
- EFFECTIVE COMMUNICATION
- RESPONSIBLE DECISION MAKING
- CRITICAL THINKING
- GOAL ORIENTED BEHAVIOR
- PERSPECTIVE TAKING
- EMPATHY
- SELF-AWARENESS
- EMOTIONAL REGULATION
- GRATITUDE
- CURIOSITY
- SELF-EFFICACY
- CREATIVITY



EMOTIONS THERMOMETER



MOVEMENT



PLAY



DANCE



ART THERAPY



WELLBEING

SUPPORTING OFFLINE LEARNERS

التعليم | education
فوق | above
الجميع | all

التعليم | education
فوق | above
الجميع | all

AMAL ALLIANCE
AMAL ALLIANCE
SUPPORTING GLOBAL CITIZENS

Socio-Emotional Learning

For 6 to 10 year-olds

Learning Resources that build socio-emotional skills and raise self-awareness.

Content Partners
storyweaver

Level 1 and 2
Workbook 1

AMAL ALLIANCE | education above all

Day 1 Colors of Kindness

Emotions Charades

- Act out the following emotions.
- Ask your friends/family to guess which emotion it is.

anxious	peaceful	content
happy	angry	sneaky
overwhelmed	excited	sad

Stretch of the Day

Do the **Turtle Pose** as shown. Stretch as far forward as you can.

CHALLENGE Create a Calming Space

Which place brings a smile to your face?
When you feel sad/stressed, imagine the place in your mind. It will help you feel confident and safe.

9

AMAL ALLIANCE | education above all

Daily Practice

Let us bring positivity into our daily life. We will try to find the good in every situation. This is why gratitude is important – it helps us see what we should be thankful for.

Take a few minutes to think about what you are grateful for and place a drawing or a note about it in a jar. Let us call it the **Gratitude Jar**.

Here is an example:
I am thankful for the sun that keeps me warm.

6

In light of the ongoing disruption to children's education, we grew increasingly concerned for learners with limited to no access to connectivity.

Developed in partnership with **Education Above All's Innovation Development Directorate**, Amal Alliance adapted our award winning Colors of Kindness program into a downloadable self-led **Social & Emotional (SEL) Learning Book**. The SEL Workbook forms part of EAA's Learning Packages, which offer ready-to-use, holistic student-centered hands-on activities that are accessible in remote or in-person learning amidst continued crisis, school lockdowns, and the growing need for screen-free learning.

Available for children ages 6-7, 8-10, and 11-14, it can be found alongside exciting Learning Packages curated from EAA's renowned Internet Free Education Resource Bank (IFERB). The Learning Packages offer a variety of additional learning tools for Early Childhood Development, Literacy, Numeracy, activities for individuals with disabilities, and much more learning fun!

The workbook has been downloaded in 175 countries, truly reaching children across the globe. As part of EAA's Afghan Emergency Response, the SEL workbook and other critical resources were translated to Dari and Pashtu to serve Afghan children.

To learn more, please visit:

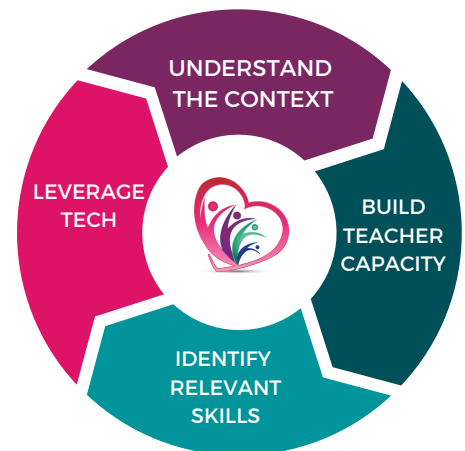
<https://resources.educationaboveall.org/index.php/learning-packages>



LEVERAGING TECH

EdTech can play an important role in enhancing the learning experience, but cannot replace classroom instruction. **Technology should not be the beginning and end of the modern learning experience, but rather, should support teachers and learners by humanizing and personalizing how they learn.** In this rapidly changing world, it is especially critical that digital technologies be used effectively in a meaningful way that supports wellbeing, protection, and pedagogical application of teaching.

But, how do we empower teachers to leverage technology without losing the human connection? We focus on 4 cornerstones that fulfill the promise of personalized learning in this digital era. They include first understanding the context to create a customized approach. Next building the capacity of the teachers' understanding of social and emotional learning, as well as how they must address their own wellbeing so it reflects in the learnings. Then we introduce skills through an SEL lens to help fill gaps in traditional learning methods. Finally, we leverage tech to enhance the experience and bring fruitful learning through a hybrid approach conducive to these unprecedented times.



GLOBAL IMPACT



We have implemented programs in 5 countries: **Bangladesh, Greece, Lebanon, Turkey, & Uganda,**

Through our pivot to digital learning and content dissemination via strategic partnerships, we have achieved greater global impact including:

➤ 275,000

children have benefitted from our programs

➤ 175

countries where our content has been used

Renewing our Commitment

Amal Alliance is a proud **Member of the Global Refugee Forum (GRF) Education Co-Sponsorship Alliance**. Launched in Geneva in December 2019, the inaugural forum helped transform the aspirations of the Global Compact on Refugees into concrete action. At the **High Level Officials Meeting**, held Dec 12-14, 2021, we were delighted to share that we fulfilled our 4 pledges, and exceeded our initial goal fivefold.

Today we renew our pledges to children worldwide. We are grateful to education stakeholders for their ongoing commitments during this crisis.



Whole Child Development

In bringing new approaches to learning, skills and inclusion for radically different outcomes, we believe in the inclusion of Psychosocial Support and Social and Emotional Learning (PSS/SEL) for whole child development.



Children's Wellbeing and Mental Health

The current global health crisis will negatively impact the emotional well-being of children and their families. We affirm providing social and emotional learning & psychosocial support programming to enhance mental health and wellbeing.



Quality Open Educational Resources

Reducing inequalities can only happen if quality educational resources are made available to all. We will continue to produce content and tools under open access licensing.



Teacher & Caregiver Support

Teachers and caregivers play a critical role in children's lives. We need to prioritize and support their wellbeing and professional development.



Advocating for a Better Future

Meaningful advocacy is key to transforming systems that reflect more equity and inclusive. Furthermore, children need to learn the skills necessary to flourish in life.

OUR PARTNERS & SPONSORS



TRANSPARENCY MATTERS



Amal Alliance is 100% voluntary led, with all contributions going directly to programming costs to serve our beneficiaries. 990 forms are available online to uphold our commitment to transparency.

OUR TEAM

Founder & Executive Director

Danielle De La Fuente

Board of Directors

Mr. Eduardo Jose Carrillo Marquez

Mrs. Bertha De La Fuente

Mr. Andre Gordilho

Dr. Tara Raafat

Mrs. Genevive Trencher

Ms. Aizat Zhakbelieva

Ms. Parisa Elhani

Ms. Kathleen LaParle

Mr. Dominic Register

Advisory Board

Ms. Catalina Martinez, Colombia

Mr. Mehdi Azodi, Canada

Ms. Marie-Solene Prudhomme, France

Ms. Nele Feldmann, Germany

Ms. Ana Rocio Monzon Woc, Guatemala

Mr. Marios Dakis, Greece

Ms. Ritu Mahindru, India/USA

Ms. Mahreen Daruwala, India

Ms. Pankti Vora, India

Ms. Monica, Kenya

General (ret) Hany Nakhle, Lebanon

Mr. Jose Manuel Cervantes, Mexico

Mr. Mauricio Torres, Mexico

Mrs. Vanessa Ringel, Mexico

Mrs. Thelma Rocha, Mexico

Ms. Vera Sarin, Mexico

Dr. Nishchal Pandey, Nepal

Dr. Elor Nkereuwem, Nigeria

Amb (ret) Husain Haqqani, Pakistan

Mr. Christoffer Carlsson, Sweden

Mr. Marcelo Garcia, Switzerland

Dr. Margaret Sinclair, UK

Ms. Lindsay Holliday, USA

Mr. Judson LaCapra, USA

Ms. Erin Robertson, USA

Mrs. Joanne Lloyd, LICSW, USA

Ms. Diane Kaldany, USA

Mr. Rashaun Williams, USA

Mr. Jeffrey Haddad, USA

Resident Scholars

Ms. Sundos Sharaf, Columbia University

Ms. Bari Dershowitz, NYU

Appreciated Associates

Mr. Koji Miyamoto

Mrs. Jane McCall Politi

Mrs. Maria Pia Belloni

Dr. Jamie Boyd, L.Ac.

Mrs. Deepa Buddhavarapu

Mrs. Ann Rakoff

Ms. Joyana Richer

Ms. Julia Maselli

Ms. Cuari Nema

Mrs. Allie Simmons

YourTranslator.io

Ms. Christina Stidman

Mr. Jon Barbarin

Coalitions, Networks, & Affiliations

Boston University's Global Development Policy Center

Columbia University School of Social Work

Consortium for Street Children

COVID 19-Response Consortium

Disney VoluntEARS

EASEL Lab of Harvard Graduate School of Education

Eversheds-Sutherland Pro-Bono Legal Representation

Future of Jobs Committee, G-20Y Association

Global Campaign for Education USA

Inclusive Education & Early Childhood CoP

INEE Early Childhood Dev. in Emergencies Task Team

INEE Teacher Wellbeing Reference Group

Institute of International Education Scholar Rescue Fund

Karanga, Global Alliance for SEL & Life Skills

NGO CoM Subcommittee on Children

NYU Silver School of Social work

UNHCR GRF Forum Primary Task Team

UNHCR Humanitarian Education Accelerator (HEA)

Taproot Foundation

To Empower Women Accounting

The Federation of Sustainable Development Orgs

THRIVE Coalition

Wellbeing Coalition

Whole Child Development for Displaced Learners



2021 Annual Report






Contact Us:

902 Broadway Floor 6
New York, NY 10019

+1 (646) 535-4563
info@amalalliance.org



Follow Us:

-  @amalalliance
-  @amalalliance
-  /amalalliance